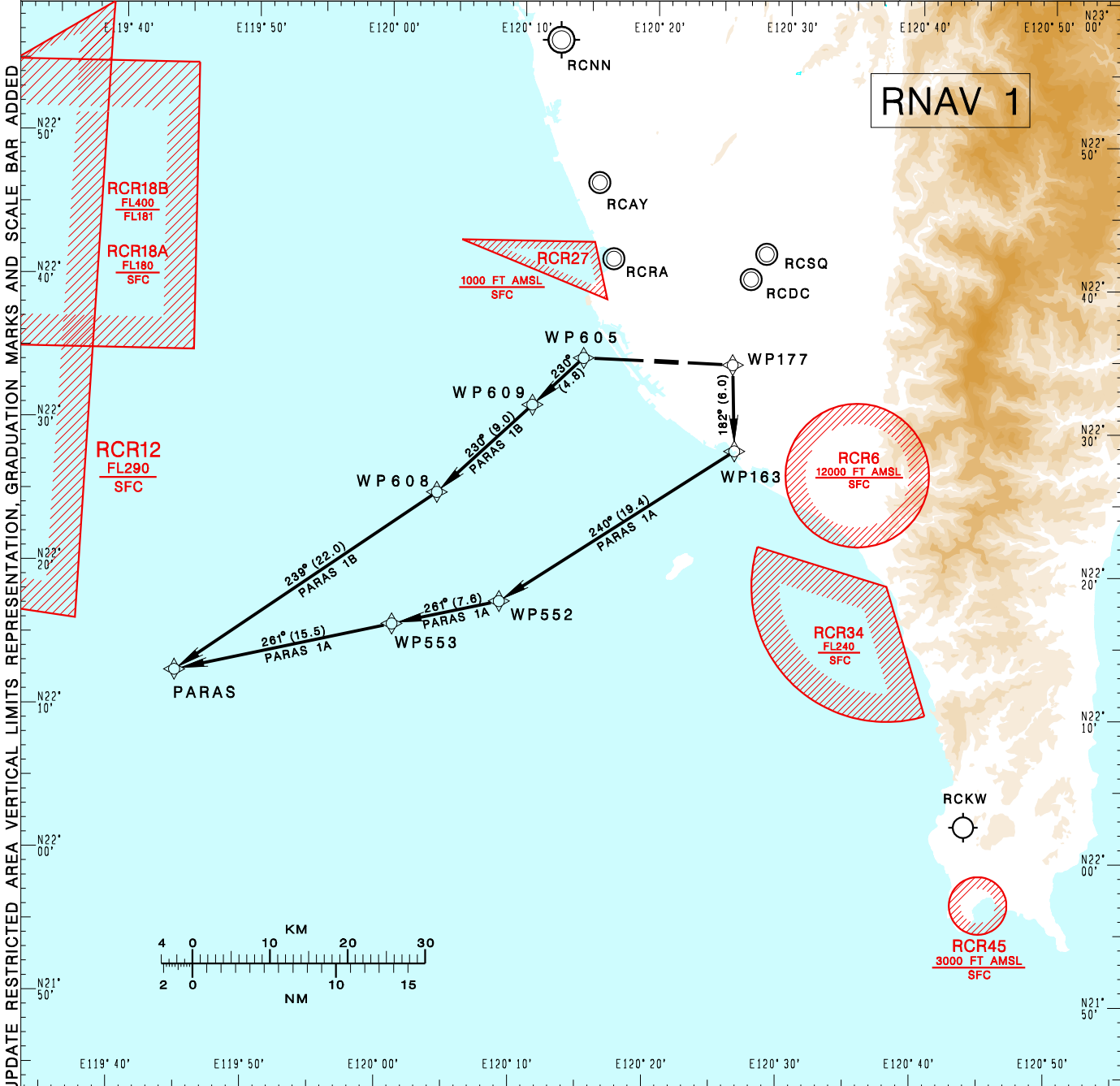


**高雄國際機場**  
KAOHSIUNG INTL AD

RCKH SID  
PARAS 1A RNAV(RWY09)  
PARAS 1B RNAV(RWY27)

KAOHSIUNG APP 124.7 125.7	KAOHSIUNG TWR 118.7 120.7	ATIS 127.8		
Apt Elev: 32'		Trans Level: FL130		Trans Alt: 11,000'
BEARINGS ARE MAGNETIC; DISTANCES ARE NAUTICAL MILES; ELEVATIONS, HEIGHTS IN FEET				



CHANGES: NEW PAGE NUMBER, UPDATE RESTRICTED AREA VERTICAL LIMITS REPRESENTATION, GRADUATION MARKS AND SCALE BAR ADDED	<p><b>PARAS ONE ALFA RNAV DEPARTURE</b> Climb on RWY HDG until 540ft, then direct to WP177, then to WP163, WP552, WP553, PARAS. Cross WP177 at or above 1,000ft, cross WP163 at or above 3,000ft, cross WP553 at or below 7,000ft.</p>	<p><b>NOTE</b></p> <ol style="list-style-type: none"> <li>1.PARAS 1A: Requires minimum climb gradient 6.0% (365 ft/NM) until WP163. Speed restriction of 210KT IAS maximum until WP163.</li> <li>2.Caution: pier cranes, terrain and stacks east, west and south of airport.</li> <li>3.ATS surveillance required.</li> </ol>
	<p><b>PARAS ONE BRAVO RNAV DEPARTURE</b> Climb on RWY HDG until 540ft, then direct to WP605, then to WP609, WP608, PARAS. Cross WP609 at or below 8,000ft.</p>	